

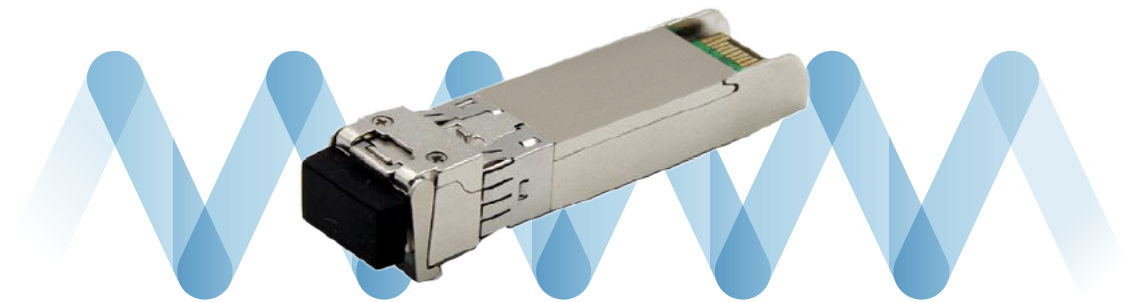
SFP10G-MM - 310055



SFP+ 10GBASE-SR, LC connector, 850 nm, multimode (MM), up to 300 m, from 0° to +70 °C

DESCRIPTION

SFP+ 10GBASE-SR, LC connector, 850 nm, multimode (MM), up to 300 m, from 0° to +70 °C



KEY STRENGTHS

- Supports rate from 1.25 Gb/ to 10.3 Gb/s bit rates
- Optical interface compliant to IEEE 802.3ae
- Electrical interface compliant to SFF-8431
- Hot Pluggable
- 1310nm DFB transmitter, PIN photo-detector
- Operating case temperature:
Commercial : 0 to 70 °C
Industrial: -40 to +85°C
- Low power consumption
- Applicable for 10km SMF connection
- All-metal housing for superior EMI performance
- Advanced firmware allow customer system encryption information to be stored in transceiver
- Cost effective SFP+ solution, enables higher port densities and greater bandwidth
- RoHS6 compliant (lead free)
- Compatible with the AX range



Updated on: 9 April 2026

This document is confidential and the property of ADALTRA. ADALTRA holds the copyright, and the document may not be copied or modified, in whole or in part, in any form, without ADALTRA's prior written permission. The features/specifications indicated in this document are non-contractual and may be changed without prior notice.

APPLICATIONS

- 10GBASE-LR at 10.3125Gbps
- Other optical links