

# SPLITTERS WITH F CONNECTOR

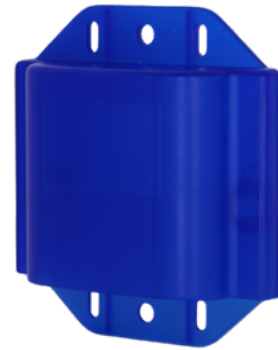
RI 2 · RF 12 · RF 13 · RF 14  
RF 16 · RF 18

Lte2

- ✓ Screening factor A class
- ✓ DC pass in each output (out>>in)
- ✓ 5-2400 MHz
- ✓ Waterproof case (Optional)



RI 2



PMM



RF 12



RF 13 · RF 14



RF 16 · RF 18



## TECHNICAL TABLE

REFERENCE		RF 2	RF 12	RF 13	RF 14	RF 16	RF 18
Code		141006	141001	141002	141003	141004	141005
Passband	MHz	5-2400	5-2400	5-2400	5-2400	5-2400	5-2400
Outputs	N°	2	2	3	4	6	8
Insertion loss	dB 860 MHz dB 2400 MHz	4 5,5	4 5,5	7 9,5	8,1 10	11 14,5	12 15,5
Outputs isolation	dB	>20	>20	>20	>20	>20	>20
Return loss	dB	>10	>10	>10	>10	>10	>10
DC Pass	mA	300	300	300	300	300	300

REFERENCE		PMM
Code		024001