

# PROFESSIONAL IPTV SERVERS

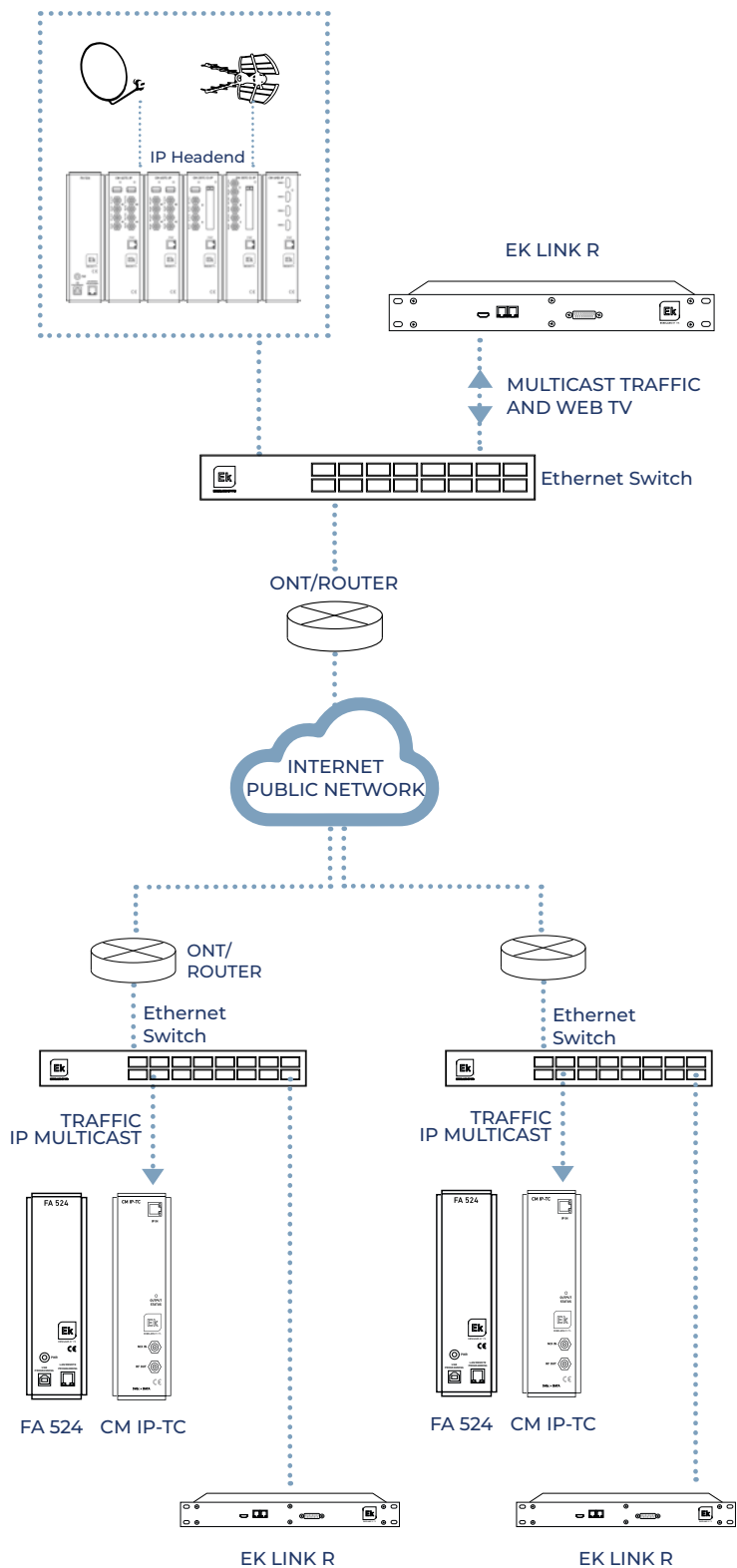
## EK LINK R



- ✓ Bidirectional IP converter / adapter between multicast and webTV protocols (HLS / RTMP / MPEG-DASH)
- ✓ Allow the reception of services from different servers from the cloud
- ✓ Import and export of configurations
- ✓ Memory and CPU use statistics
- ✓ Management of several user profiles



EK LINK R





## TECHNICAL TABLE

Reference		EK LINK R
Code		280052
Input		
Signal		IP Multicast (UDP) / WebTV (RTMP (Push/Pull) , HLS, MPEG-DASH)
Interface	Mbps	10/100/1000
Supported codecs*	Video	MPEG-1 video / MPEG-2 video / H.264 / H.265 HEVC
	Audio	AAC / AAC LATM / AAC ADTS / MPEG4 ASC / MP1 / MP2 / MP3
Output		
Signal		IP Multicast (UDP) / WebTV (RTMP (Push/Pull) , HLS, MPEG-DASH)
Interface	Mbps	10/100/1000
Supported codecs*	Video	MPEG-1 video / MPEG-2 video / H.264 / H.265 HEVC
	Audio	AAC / AAC LATM / AAC ADTS / MPEG4 ASC
Uninterleaver		Yes
Maximum Resolution	Pixels	Up to 4K
Transcoding*		
Video		Not available
Audio		Supported codecs on input to AAC AAC ADTS to MPEG4 ASC
Others		
Number of programs**		Up to 20 SD services or 15 HD services
Programming		Web interface
Supply voltage	Vac	85-264
Consumption	W	< 50
Format	mm	Modular (1 RU 19")
Working temperature	°C	0-40

\*Other options to consult

\*\*Reference values depending on input coding and bit rate