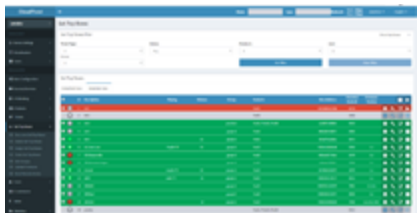
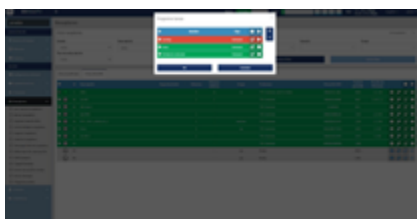




EkHEALTH

EK HEALTH
EK HEALTH PRO
EK HEALTH PLUS

- ✓ IPTV multicast processing server adapted for healthcare environments
- ✓ web TV for hospitals / nursing homes.
- ✓ Simplified configuration portal.
- ✓ Channel configuration and customizable information according to patient or resident characteristics.
- ✓ Option to create notifications, alerts, or alarms directed to the personnel in charge of patient or resident care.
- ✓ Centralized shutdown and startup of receivers.
- ✓ Option for maximum volume limitation.
- ✓ Possibility of centralized and timed channel selection.
- ✓ Playout of 2 or 5 channels (depending on the model)
- ✓ Task scheduler
- ✓ VoD (depending on the model)



EKSELANS BY ITS



EK HEALTH
EK HEALTH PRO



EK HEALTH PLUS

EK HEALTH acts as middleware that enables the aggregation of audio and video services transported via multicast and/or webTV for distribution and reception on IPTV devices (IP BASIC STB).

It allows for customized channel sorting by device, with the ability to sort them by user or user groups according to their profile (age, language, preferences, etc.). Additionally, the system allows for the creation of channel packages and grouping into "products" for assignment to users.

EK HEALTH features a management system for IP BASIC STB (180012) receivers that enables:

- ✓ Monitor the status of all receivers connected to the headend.
- ✓ Turn on and off receivers individually, collectively, or by segments.
- ✓ Activate, deactivate, and change channels on receivers individually, collectively, or by segments.
- ✓ Adjust the volume of receivers.
- ✓ Update the EK application of each receiver individually or collectively.
- ✓ Activate and deactivate parental PIN for selected channels.
- ✓ Creation of internal warning/alarm channel (requires an external source).

The system allows for basic configuration of the management portal. Additionally, the network manager can set the logo and name of each service, include a platform logo, and configure the general and specific service sorting by user or user group.

There's also the option to incorporate an Electronic Program Guide (EPG) to the distributed IPTV channels. For this, connection to the EK EPG product (additional service) is required.



Two channel list formats:



Channel logo mosaic



Classic list with channel names

In either of the two infrastructure scenarios presented:



Option to create a corporate channel for the center (daily menus, daily activities, photos of parties and events at the residence) in slideshow carousel mode that can be viewed as an additional channel on the channel grid.



Option to create a specific channel for digital signage screens (with corporate information, advertising, information about events and activities at the center, etc.).

Streaming platform viewing



Access to the applications of the most popular streaming platforms from the installed APP on each receiver with the resident's own account.

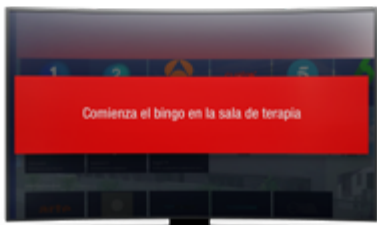
Customized remote controls



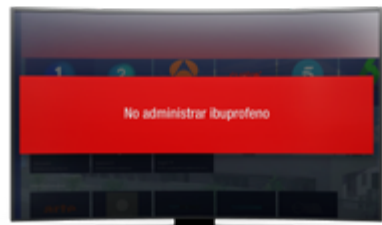
Segmenting by property type of models according to:

- ✓ Resident's level of dependency
- ✓ Type of services contracted by the resident
- ✓ Specific needs

Other possible functionalities



The possibility of sending warning messages to the rooms and digital signage screens, for example, indicating that it is lunch or dinner time, fully customized by the established shifts for each resident. It could even incorporate the broadcasting of pre-recorded audio messages. For example: -"Es la hora de la comida" -"Comienza el bingo en la sala de terapia"



The ability to send notifications to the center's staff to the receiver in the room where they are attending to a resident with information about: -Medication to be administered to the patient. -Instructions to consider when putting to bed or getting up the patient. -Any other care guidelines for the resident.

Ejemplo de aplicación

