

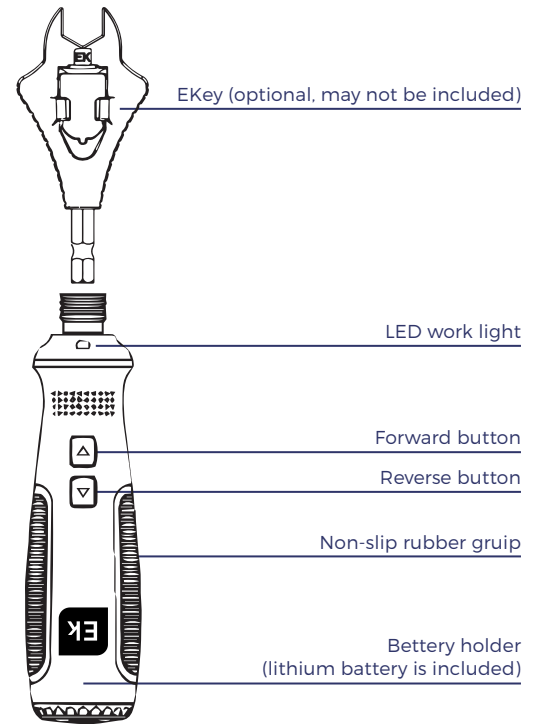


## USB Rechargeable Manual & Electric Screwdriver EKdriver

This product supports manual and electric operation, and is primarily intended to be used with the special tool for twist on EK F connectors mounting, "EKey". Likewise is applicable to tightening and unscrewing screws, DIY furniture assembly and other daily household or professional use. Please read the user manual carefully and use it properly. Thank you for your purchase.

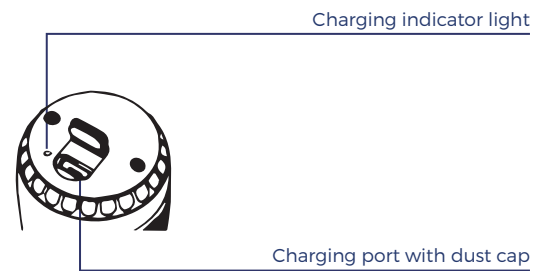
### Product description

REFERENCE	EKdriver
Code	167006
Battery capacity	18650 lithium battery 3.6V 2000mAh
No load speed	280 RPM
Hex chuck diameter	6.35mm
Maximum torque	6N.m (electric); 20N. (manual)
Charging time	60 mins
Continuous using time	200 mins (input 5V, 1A)
Charging port	Micro 5pin-USB charging cable (included)
Charging voltage	W5 & 1A
Weight	150g (only the main body)
Working ambient temperature	-10°C - 40°C
Charging ambient temperature	4°C - 40°C
Accessory	May vary depending on product sets



### Charging/Battery

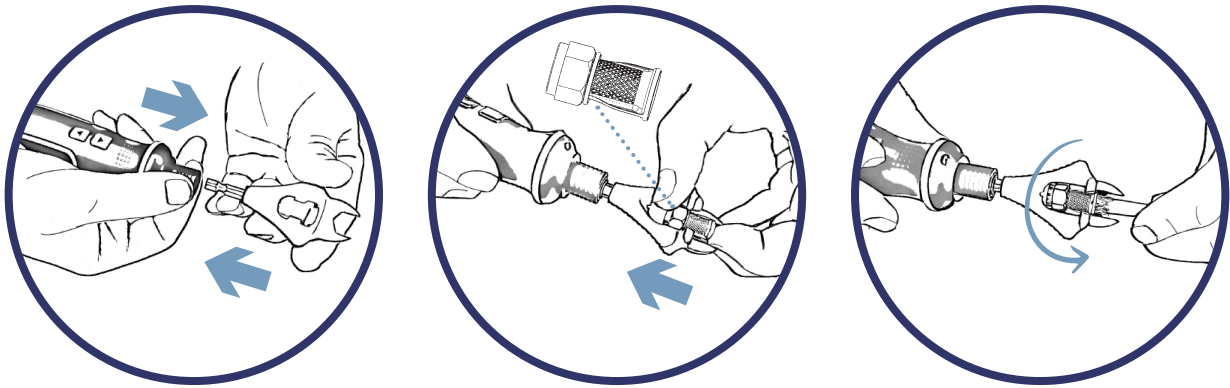
MICRO 5in USB charging	
● Red light	Charging
● Green light	Fully charged



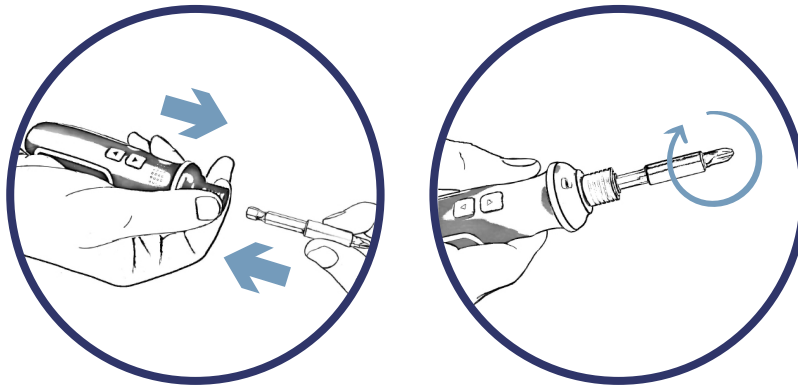
The **EKdriver** rechargeable battery is replaceable. Unscrew the two small Phillips screws on the end of the screwdriver, Install the battery with the positive terminal facing inward. Then tighten the screws back to finish the battery replacement.

1. Please charge with the Micro 5pin USB charging cable provided.
2. Please insert the USB charging cable into USB outlet port (such as laptop, AC adapter, power bank, etc.).
3. After complete charging, please unplug the USB charging cable from the USB outlet port first, then remove it from this product.
4. The charging time is about 60 minutes.
5. Please do not use this product during charging, which may damage the battery or shorten its life.

## CFR 5 EK / CFR 6 EK connector mounting with Ekey



## Screwdriver use



1. Please pull up the quick released chuck of the product to open.
2. Please choose and insert the EKey or appropriate 6.35mm screw bit and fix.

**Unscrew screw:** press the ▼ button.

**Tighten screw:** press the ▲ button.

### Warning:

1. Please do not replace the accessory when the product is working. Do not grip the bit or the chuck to avoid injury.
2. Shall not use in damp or rainy environment to avoid electric shock or damage
3. Shall not work on walls with built-in wires.