

ACCESSORIES

EK DRIVER · EKEY

EKey

- √ Exclusive EK tool, designed to make it even easier to assemble the patented CFR6EK and CFR5EK F-type connectors.
- √ It's an ergonomically designed handle that adapts to the installer's hand and allow a very easy assembly
- √ Compatible with electric drills and screwdrivers. Among them the EKdriver
- √ Allows a much greater threading force to be applied than in a conventional twist-on connector
- √ Equipped with an 11mm fixed wrench for F connectors
- √ Made of high-strength nylon

EKdriver

- √ Electric screwdriver designed to be used together with the EKey tool
- √ Ergonomic design and similar size to a conventional screwdriver
- √ Compatible with standard 6mm hex bits
- √ Supplied in a complete case with charger, bit set and an EKey

Access the EK DRIVER and the EKEY [video](#)



EKEY



EK DRIVER



Ek DRIVER cover

Battery holder
(lithium battery is included)

Non-slip rubber griip

Forward button

Reverse button

LED work light

EKey (optional, may not be included)



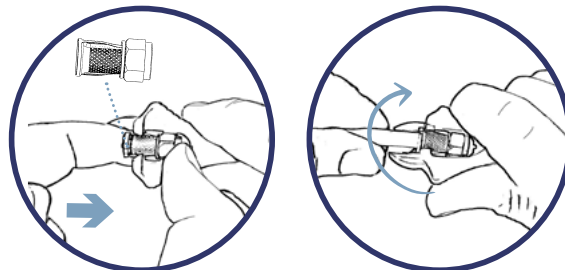
TECHNICAL INFORMATION

REFERENCE	EKdriver
Code	167006
Battery capacity	18650 lithium battery 3,6V 2000mAh
No load speed	280 RPM
Hex chuck diameter	6,35mm
Maximum torque	6N.m (electric); 20N. (manual)
Charging time	60 mins
Continuous using time	200 mins (input 5V, 1A)
Charging port	Micro 5pin-USB charging cable (included)
Charging voltage	W5 & 1A
Weight	150g (only the main body)
Working ambient temperature	-10°C - 40°C
Charging ambient temperature	4°C - 40°C
Accessory	May vary depending on product sets

REFERENCE	Ekey
Code	167005

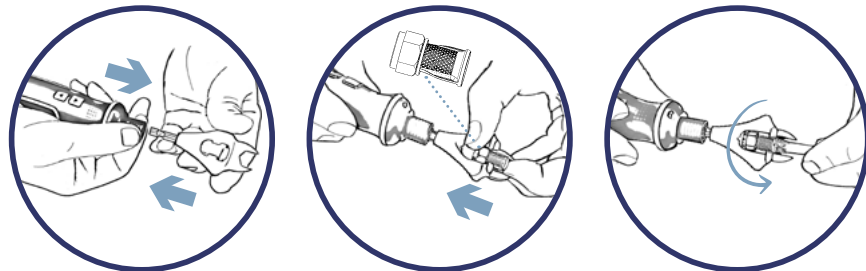
CFR 5 EK / CFR 6 EK connector mounting with Ekey

Ekey used by hand



Ekey using Ekdriver*

**Electric drills can be used at low speed*



EKdriver use

