

FIBER OPTICS

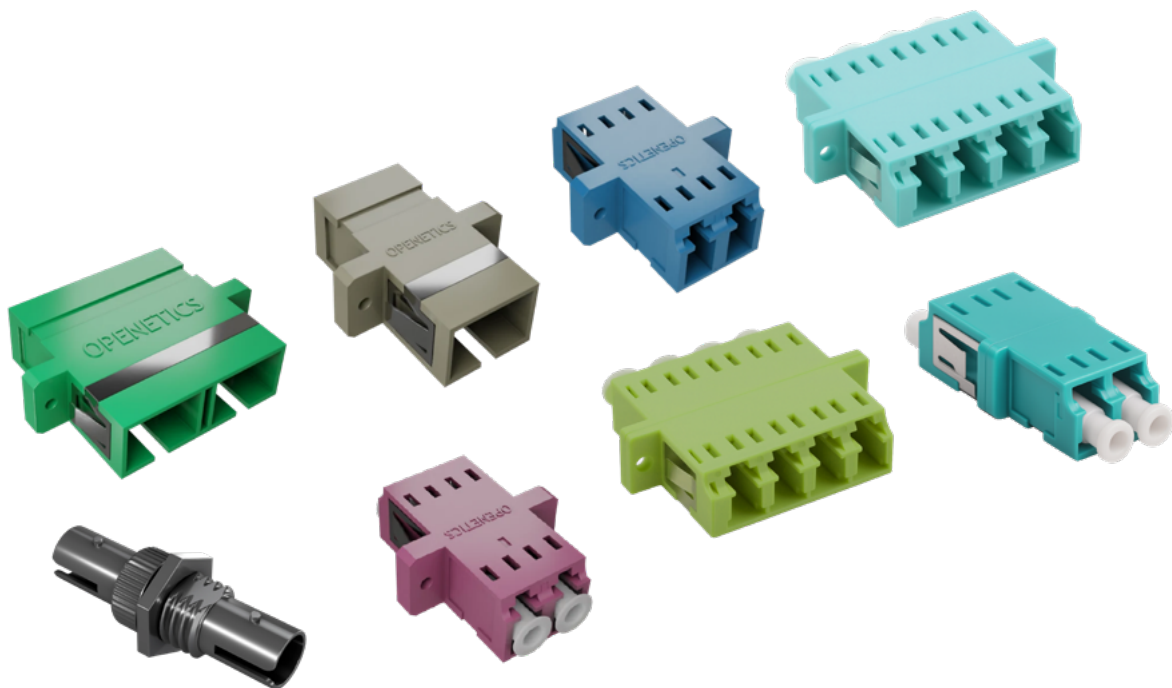
Wall bushings for multimode and single-mode fiber optics

DESCRIPTION

Fiber-optic adapters, also known as couplers, are components that allow two optical connectors to be mated together. Depending on the type of connectors being mated, adapters can be of two types: symmetrical or mixed.

Symmetrical cable glands are those that accommodate connectors of the same type, while mixed cable glands accommodate connectors of different types.

Wall bushings labeled SM (single-mode) feature a ceramic (zirconia) sleeve, while those labeled MM (multimode) feature a metal (phosphor bronze) sleeve.



APPLICATIONS

- Universal adapter compatible with all optical ports
- Junction boxes, communication equipment, junction boxes and jobs

OPENETICS
/ ADALTRA

Updated on: February 17, 2025

This document is confidential and the property of ADALTRA. ADALTRA holds the copyright, and the document may not be copied or modified in any way, in whole or in part, without the written permission of ADALTRA. The specifications contained in this document are not binding and are subject to change without notice.

ADVANTAGES

- Connecting male fiber-optic connectors.
- The body of the cable glands can be made of metal or plastic.
- OPENETICS supplies ST, SC, and LC feed-throughs, as well as any other type the customer may require, both in both single-mode and multimode versions.
- Single and double versions, for one or two connectors on each side, respectively.
- The dual wall bushings follow the A-B coding to ensure correct polarity in the two-way communication.
- Allows for easy interconnection of equipment used in fiber-optic cabling systems.
- They feature a snap ring that ensures proper alignment of the connectors.
- Models with APC coating for high reflection loss.

REGULATIONS

Mechanical and thermal tests in accordance with:	Fire test in accordance with:
EN 187000	UNE-EN 50265 (IEC 60332-1)
IEC 60794	UNE-EN 50268 (IEC 61034-1/2)

PHYSICAL SPECIFICATIONS: MM POLISHED PC WALL PLUG

Typical attenuation	0.20 dB
Maximum attenuation	0.40 dB
Δ Attenuation (500 cycles):	0,1
Operating temperature:	-40 to +85°C
Retention force (N):	300

PHYSICAL SPECIFICATIONS FOR MM POLISHED WALL PLUG UPC

Typical attenuation	0.15 dB
Maximum attenuation	0.30 dB
Δ Attenuation (500 cycles):	0,1
Operating temperature:	-40 to +85°C
Retention force (N):	300

PHYSICAL SPECIFICATIONS: MM POLISHED WALL BUSHINGS (APC)

Typical attenuation	0.10 dB
Maximum attenuation	0.20 dB
Reflection losses	> 60 dB
Δ Damping (500 cycles)	0,1
Operating temperature	-40 to +85°C
Retention force (N)	300
Color of the wall bushing	Green

Updated on: February 17, 2025

This document is confidential and the property of ADALTRA. ADALTRA holds the copyright, and the document may not be copied or modified in any way, in whole or in part, without the written permission of ADALTRA. The specifications contained in this document are not binding and are subject to change without notice.

BUSINESS INFORMATION

REFERENCE	DESCRIPTION	FIBER TYPE	CONNECTOR TYPE	COLOR	VERSION	U/EMB
5055	Wall-mounted	MM OM2	ST-ST/PC with fins	Metallic	Simplex	1
5076	Wall-mounted	MM OM2	SC-SC/PC with fins	Beige	Simplex	1
5079	Wall-mounted	MM OM2	FC-FC/PC with fins	Metallic	Simplex	1
5101	Wall-mounted	MM OM2	ST-ST/PC with fins	Beige	Duplex	1
5060	Wall-mounted	MM OM2	SC-SC/PC with fins	Beige	Duplex	1
5050	Wall-mounted	MM OM2	SC-ST/PC with fins	Beige	Duplex	1
5087	Wall-mounted	MM OM2	LC-LC/PC with fins	Beige	Duplex	1
5089	Wall-mounted	MM OM3	SC-SC/PC with fins	Aqua	Simplex	1
50511	Wall-mounted	MM OM3	SC-SC/PC without fins	Aqua	Simplex	1
5090	Wall-mounted	MM OM3	SC-SC/PC with fins	Aqua	Duplex	1
5093	Wall-mounted	MM OM3	LC-LC/PC with fins	Aqua	Duplex	1
50515	Wall-mounted	MM OM3	LC-LC/PC without fins	Aqua	Duplex	1
5491	Wall-mounted	MM OM3	LC-LC/PC with fins	Aqua	Quadruplex	1
5489	Wall-mounted	MM OM4	SC-SC/PC with fins	Violet	Simplex	1
50516	Wall-mounted	MM OM4	SC-SC/PC without fins	Violet	Simplex	1
5490	Wall-mounted	MM OM4	SC-SC/PC with fins	Violet	Duplex	1
5493	Wall-mounted	MM OM4	LC-LC/PC with fins	Violet	Duplex	1
5494	Wall-mounted	MM OM4	LC-LC/PC without fins	Violet	Duplex	1
5492	Wall-mounted	MM OM4	LC-LC/PC with fins	Violet	Quadruplex	1

REFERENCE	DESCRIPTION	FIBER TYPE	CONNECTOR TYPE	COLOR	VERSION	U/EMB
5495	Wall-mounted	MM OM5	SC-SC/PC with fins	Lime green	Simplex	1
5499	Wall-mounted	MM OM5	SC-SC/PC without fins	Lime green	Simplex	1
5496	Wall-mounted	MM OM5	SC-SC/PC with fins	Lime green	Duplex	1
5497	Wall-mounted	MM OM5	LC-LC/PC without fins	Lime green	Duplex	1
5498	Wall-mounted	MM OM5	LC-LC/PC without fins	Lime green	Duplex	1
54910	Wall-mounted	MM OM5	LC-LC/PC with fins	Lime green	Quadruplex	1
50500	Wall-mounted	SM OS2	ST-ST/UPC with fins	Metallic	Simplex	1
50502	Wall-mounted	SM OS2	SC-SC/UPC with fins	UPC Blue	Simplex	1
50505	Wall-mounted	SM OS2	FC-FC/UPC with fins	Metallic	Simplex	1
50506	Wall-mounted	SM OS2	SC-SC/APC with fins	APC Green	Simplex	1
50517	Wall-mounted	SM OS2	SC-SC/APC without fins	APC Green	Simplex	1
5086	Wall-mounted	SM OS2	LC-LC/UPC with fins	UPC Blue	Duplex	1
5082	Wall-mounted	SM OS2	SC-SC/UPC without fins	UPC Blue	Duplex	1
50501	Wall-mounted	SM OS2	ST-ST/UPC with fins	Metallic	Duplex	1
50503	Wall-mounted	SM OS2	SC-SC/UPC with fins	UPC Blue	Duplex	1
50507	Wall-mounted	SM OS2	SC-SC/APC with fins	APC Green	Duplex	1
50504	Wall-mounted	SM OS2	SC-ST/UPC with fins	UPC Blue	Duplex	1