

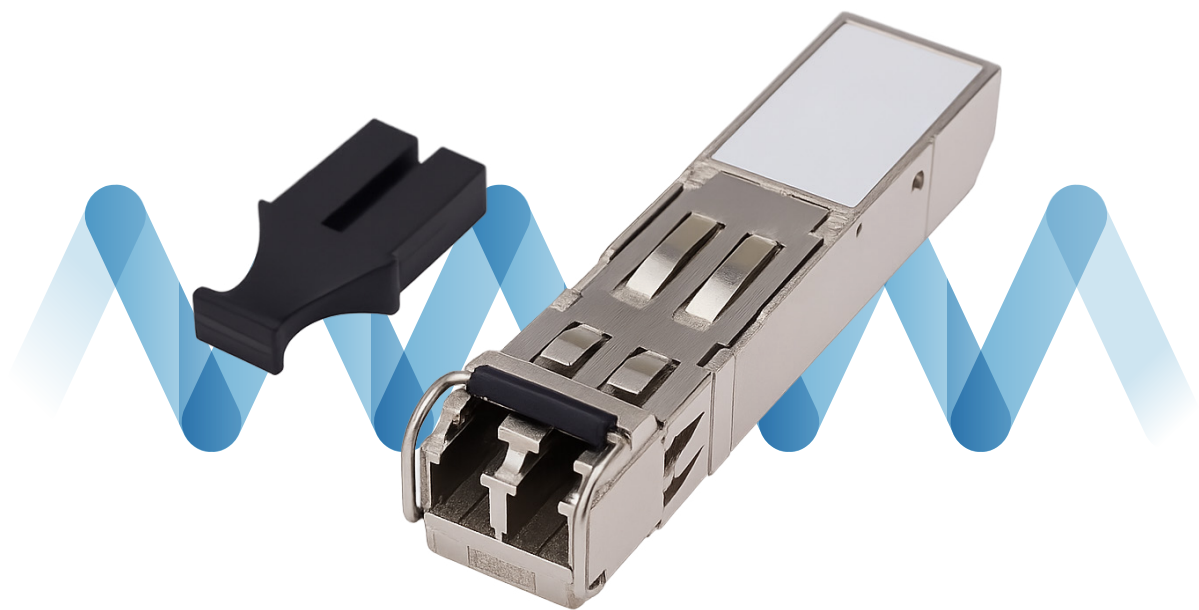
2186

**SFP 1000Base-LX, LC connector,  
1310nm, single-mode (SM)**



## DESCRIPTION

The 1.25 Gbps Small Form Factor Pluggable (SFP) transceiver modules are specifically designed for high-performance integrated duplex links over multimode or single-mode fiber optics. They are compatible with the SFP Multisource Agreement (MSA). Thanks to their hot-pluggable connection, they can be installed in MSA SFP ports without interrupting equipment operation.



## FEATURES AND BENEFITS

- SFP package with LC/UPC receptacle connector.
- Up to 10 km above SMF.
- Storage temperature from 0 to +85 °C.
- Operating temperature from 0 to 70 °C.



Updated on: December 11, 2025

This document is confidential and the property of ADALTRA. ADALTRA owns the copyright and the document may not be copied or modified in any way, in whole or in part, without the written permission of ADALTRA. The features described in this document are not contractual and are subject to change without notice.

**REGULATIONS**

IEC 60825 Class 1	UL
FCC	ROHS
EC	

**TECHNICAL SPECIFICATIONS**

Output power	min. -9.5 max. -3 dBm
Sensitivity	-20 dBm

**ORDER INFORMATION**

REFERENCE	DESCRIPTION	PACKAGING
2186	SFP 1000Base-LX, LC connector, 1310 nm, single mode (SM), up to 20 km, from 0°C to +70°C.	1