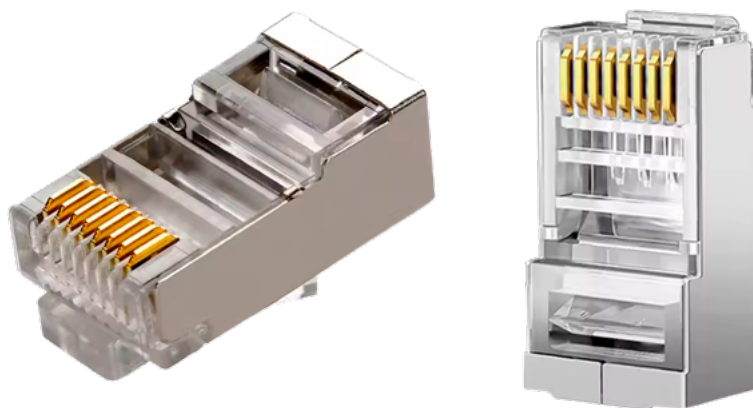


## EZ shielded Cat. 6A RJ45 male connector, straight-through



### Description

The EZ shielded Cat. 6A RJ45 male connector is used for crimping at the ends of twisted pair cable. Connector covers can also be added for a neat finish.

### Applications

Supports all current LAN applications, including:

- 10 BaseT
- 100 BaseT4
- 100 BaseTX
- 1000 BaseT
- 10 G BaseT
- Broadband
- ISDN
- 100 Mbps Token Ring
- 4 and 16 Mbps Token Ring

### Regulations

- ISO/IEC 11801
- ANSI/TIA/EIA 568-B2
- CENELEC EN50288-3, EN50173:2002, EN50167, EN50169

### Benefits and Features

- Exceeds Cat. 6A requirements set by the standard.
- High protection against interference.
- Robust design and easy assembly.
- High level of quality.
- 50 µ inch gold-plated contacts .
- Easy and quick connection with specific RJ45 crimping tool.
- Allows connection of both T568-A and T568-B.

### Headquarters and Offices in Spain

#### Barcelona:

Avda. Cerdanyola 79-81 Local C (08172) Sant Cugat del Vallès. Barcelona (Spain)

T: (+34) 93 784 82 12 F: (+34) 93 784 82 10 E: info@openetics.com

© 2026 ADALTRA IBERIA S.L.U. All rights reserved.

The specifications published here are current as of the date of publication of this document. As we continuously improve our products, OPENET ICS reserves the right to modify the specifications without prior notice.

## EZ shielded Cat. 6A RJ45 male connector, straight-through

## General Specifications:

■ Formed by:	8 contacts
■ Cover material:	Fully shielded zinc-plated bronze
■ Contact material:	Bronze with 50 µ inches of gold over 100 µ inches of nickel
■ Operating temperature:	-40°C to 68°C
■ Conductor type:	Compatible with 23-26 AWG flexible cable
■ Color:	Metallic
■ Insulation resistance:	100 MΩ
■ Contact resistance:	≤ 20 mΩ
■ Connector force retention:	140 N
■ Durability:	750 cycles

## Electrical Characteristics

Frequency (MHz)	LLC (dB)	ATT (dB/100)	NEXT (dB)	Next Power Sum (dB)
772 kHz	--	1.8	67.0	64.0
1 MHz	20.0	2.0	65.3	62.3
4MHz	23.0	4.1	56.3	53.3
8 MHz	24.0	5.8	51.8	48.8
10 MHz	25.0	6.5	50.3	47.3
16 MHz	25.0	8.2	47.3	44.3
20 MHz	25.0	9.3	45.8	42.8
25 MHz	24.2	10.4	44.3	41.3
31.25 MHz	23.3	11.7	42.9	39.9
62.5 MHz	20.7	17.0	38.4	35.4
100 MHz	19.1	22.0	35.3	32.3
200 MHz	18.0	29.2	40.8	37.8
250 MHz	17.3	33.0	39.3	36,3
500 MHz	15.6	48.1	34.8	31,8

## Commercial Information

Ref.	Description	Connector type	Number of pins	Unit of packaging
0022	Cat. 6A RJ45 male connector EZ pass-through shielding	STP	8	100

## Headquarters and Offices in Spain

## Barcelona:

Avda. Cerdanyola 79-81 Local C (08172) Sant Cugat del Vallès. Barcelona (Spain)

T: (+34) 93 784 82 12 F: (+34) 93 784 82 10 E: info@openetics.com

© 2026 ADALTRA IBERIA S.L.U. All rights reserved.

The specifications published here are current as of the date of publication of this document. As we continuously improve our products, OPENETICS reserves the right to modify the specifications without prior notice.