

Ek

EKSELANS BY ITS

2024
VERSION

PROFESSIONAL WIFI ACCESS POINT SYSTEM



100%
DESIGNED
by Ek



ENTRA EN EL MUNDO EK

PROFESSIONAL WIFI ACCESS POINT SYSTEM.

100%
DESIGNED
by Ek



Ekselans by ITS R&D team has fully developed the new series of TR Enterprise WiFi access points, based on the extensive experience provided by the countless WiFi installations made with EK access points.

The TR Enterprise Series is based on a very powerful hardware design on which software has been developed capable of responding to the most demanding market demands in terms of connectivity, connection speed, high concurrent users and high demand for multimedia services (HD videos, streaming, online gaming,...). Hotels, hospitals, offices, industrial facilities, shopping malls, individual houses and apartments,... Wherever connectivity requirements ask for a professional solution, the TR Enterprise Series is the right choice.



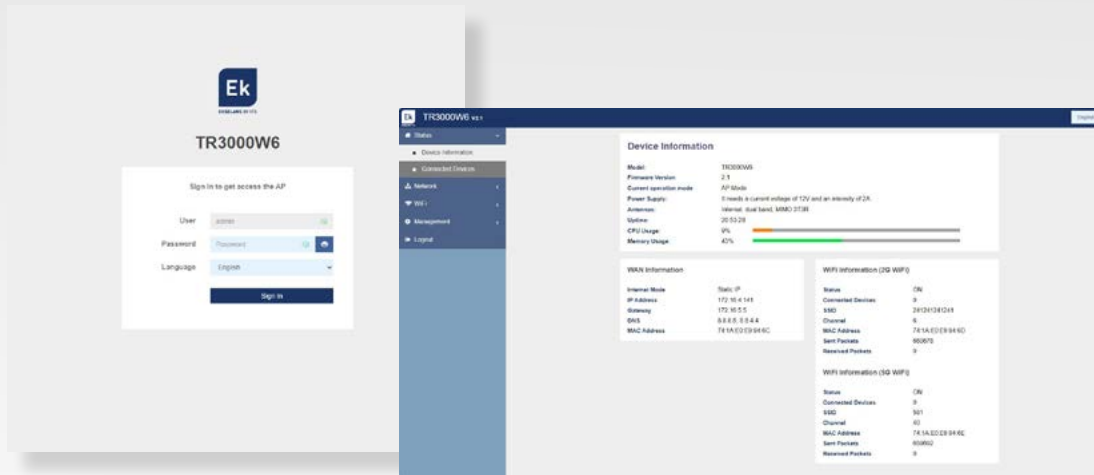
**WHEREVER CONNECTIVITY REQUIREMENTS
ASK FOR A PROFESSIONAL SOLUTION, THE TR
ENTERPRISE SERIES IS THE RIGHT CHOICE.**

TR Enterprise Series Key-Points

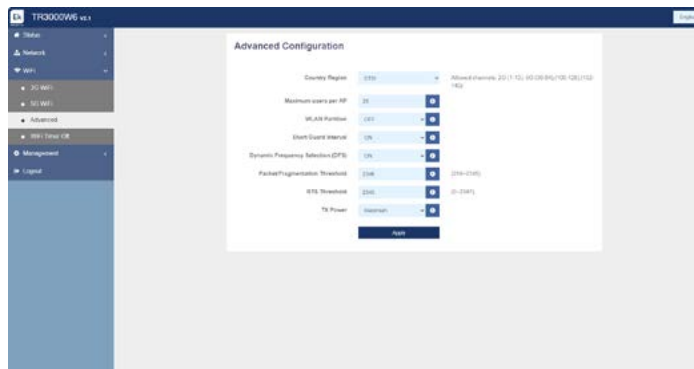
- ✓ IEEE 802.11ax WiFi6 and 802.11ac
- ✓ Data-rate capacity up to 3000Mbps
- ✓ MU-MIMO technology for simultaneous communication with multiple devices.
- ✓ Beamforming technology with wireless transmission beam adaptation
- ✓ Fast Roaming 802.11k / v
- ✓ Supports SSID Broadcasting and multiple SSIDs
- ✓ 5GHz network prioritization for decongestion of the 2.4GHz band
- ✓ Possibility of user isolation
- ✓ Simple programming via web interface in several languages
- ✓ Contextual help menus in real time
- ✓ Adjustable high Wireless power
- ✓ PoE 802.3at 48Vdc power supply or autonomous with external power supply
- ✓ Easy-to-intall ceiling or wall mounting
- ✓ High quality housing with high heat dissipation. Suitable for any type of environment (-30°C - 70°C)
- ✓ Possibility of centralized management and provisioning through EK controllers (UC TRB, UC TR and UC HS)
- ✓ Access points combinable with the EK network hotspot and auditing (CM HS and HS BASIC)



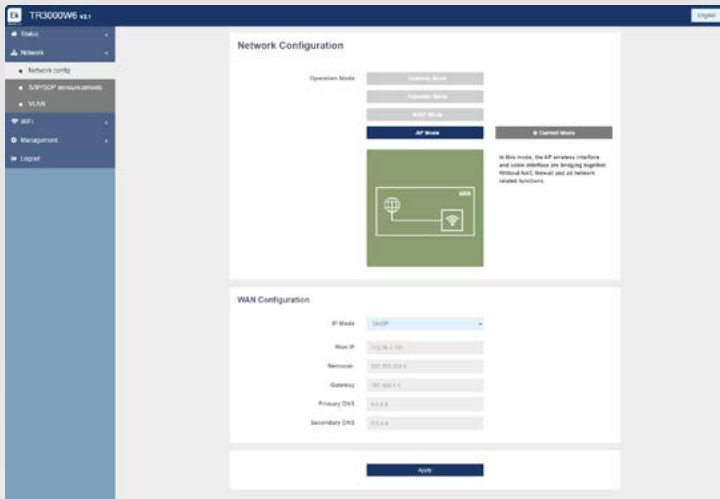
PROFESSIONAL WIFI ACCESS POINT SYSTEM.



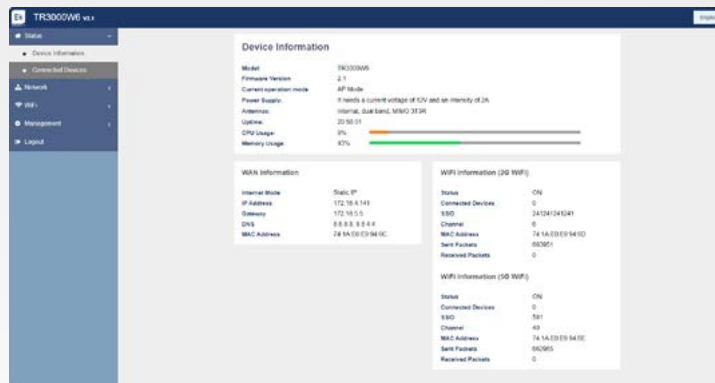
LOGIN & LOGOUT



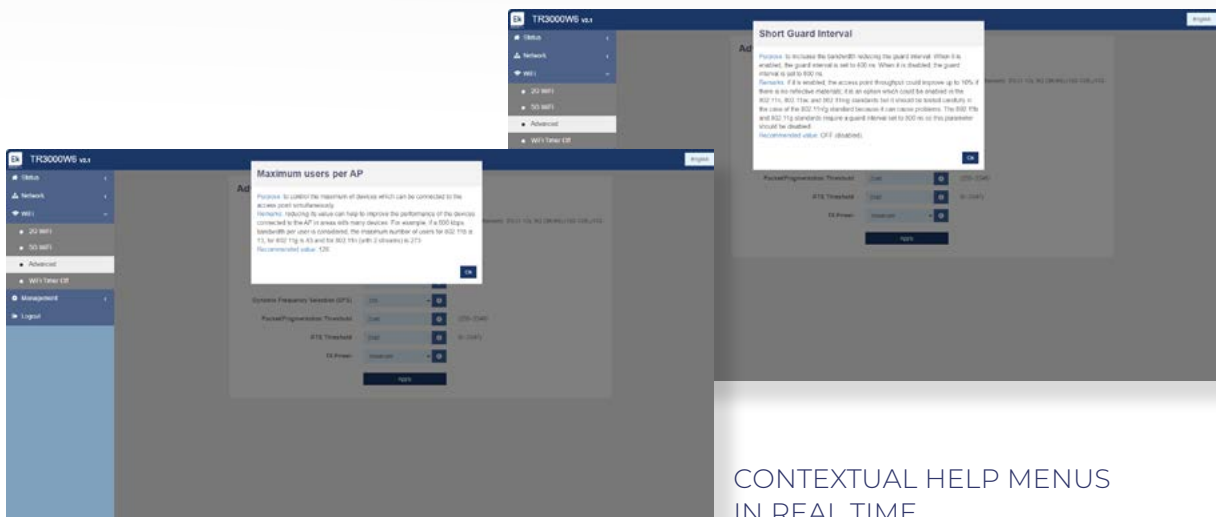
ADVANCED SETTINGS



NETWORK SETTINGS



STATUS



CONTEXTUAL HELP MENUS IN REAL TIME



INDOOR ACCESS POINTS

REFERENCE	TR 3000W6
Code	331017
Hardware:	
Chipset	Qualcomm IPQ5018+6102+8337
Standard	802.11 b/g/n/ac/ax, MU-MIMO
DDR3	512MB
Flash	128MB
2.4G Frequency	2.4GHz - 2.484GHz
2.4G Wi-Fi standard	802.11b/g/n/ax
5.8G Frequency	4,9-5,9GHz
5.8G Wi-Fi Standard	802.11 a/n/ac/ax
Interface	1 port RJ45 WAN 10/100 /1000Mbps
	1 port RJ45 console
	Reset button
Antenna	Internal antennas 4x4 dBi dual-nad MIMO
Data Rate	3000Mbps (600Mbps 2,4GHz + 2400Mbps 5GHz)
End Users	128
RF Power	25dBm
DC	12V 2A
PoE	48V (IEEE 802.3at)
LED light	Sys, WAN, LAN (configurable by SW)
Max Power Consumption	<16W
Size	184mm x 184mm x 34mm
Weight	555g
Firmware Features:	
Operating modes	Wireless AP, Gateway (Dynamic IP/ Static IP/PPPoE), repetidor WiFi, modo WISP
Wireless Functions	Multiple SSID functions: 2.4GHz: 4; 5.8GHz: 4
	Support SSID hidden
	Roaming estándares 802.11 k/v y seamless
	Priorización red 5GHz
	Wireless Security: Open, WPA, WPA2PSK_TKIPAES, WAP2_EAP, 802.1x
	MAC filter
	Support Wi-Fi time on/off to save energy
	Support client isolation to improve the wireless stability
	Support RF power adjustable
	Support user quantity limited
Networking Function	VLAN settings
	Possibility of centralized management and supply through the EK controllers (UC TRB, UC TR y UC HS) and EK CLOUD
Device Management	Back-up configuration
	Restore the configuration
	Reset to factory default
	Reboot the device
	Admin management password modify
	Firmware upgrade
	System log
Programming through web management	
Protocols	IPv4
Operating temperature	-30~70°C Humidity: 5%~95%
Mounting type	Ceiling or wall

TR 3000W6

- ✓ IEEE 802.11 b/g/n/ac/ax
- ✓ Data-rate capacity 3000Mbps (tri-band)
- ✓ MU-MIMO technology for simultaneous communication with multiple devices.
- ✓ Beamforming technology with wireless transmission beam adaptation
- ✓ Supports SSID Broadcasting and multiple SSIDs
- ✓ 5GHz network prioritization for decongestion of the 2.4GHz band
- ✓ Possibility of user isolation
- ✓ Simple programming via web interface in several languages
- ✓ Adjustable high Wireless power
- ✓ 2 GE LAN ports (10/100/1000Mbps)
- ✓ PoE 802.3at 48Vdc power supply or autonomous with external power supply
- ✓ Easy installation on ceiling or wall
- ✓ High quality housing with high heat dissipation. Suitable for any type of environment (-30°C ~ 70°C)
- ✓ Possibility of centralized management with EK CLOUD
- ✓ Access points combinable with the EK network hotspot and auditing (CM HS and HS BASIC)
- ✓ Compatible with PC controller "CSW"
- ✓ Compatible with Chromecast®





OUTDOOR ACCESS POINTS

REFERENCE	TR 3000W6 OLP
Code	331018
Hardware:	
Chipset	Qualcomm IPQ5018+6102+8337
Standard	802.11 b/g/n/ac/ax, MU-MIMO
DDR3	512MB
Flash	128MB
2.4G Frequency	2.4GHz - 2.484GHz
2.4G Wi-Fi standard	802.11b/g/n/ax
5.8G Frequency	4,9-5,9GHz
5.8G Wi-Fi Standard	802.11 a/n/ac/ax
Interface	1 port RJ45 WAN 10/100 /1000Mbps
	1 port RJ45 console
	Reset button
Antenna	Internal antennas 4x4 dBi dual-nad MIMO
Data Rate	3000Mbps (600Mbps 2,4GHz + 2400Mbps 5GHz)
End Users	128
RF Power	25dBm
DC	12V 2A
PoE	48V (IEEE 802.3at)
LED light	Sys, WAN, LAN
Max Power Consumption	<24W
Size	178mm x 333mm x 80mm
Weight	1236g
Firmware Features:	
Operating modes	Wireless AP, Gateway (Dynamic IP/ Static IP/PPPoE), repetidor WiFi, modo WISP
Wireless Functions	Multiple SSID functions: 2.4GHz: 4; 5.8GHz: 4
	Support SSID hidden
	Roaming estándares 802.11 k/v y seamless
	Priorización red 5GHz
	Wireless Security: Open, WPA, WPA2PSK_TKIPAES, WAP2_EAP, 802.1x
	MAC filter
	Support Wi-Fi time on/off to save energy
	Support client isolation to improve the wireless stability
	Support RF power adjustable
	Support user quantity limited
Networking Function	VLAN settings
	Possibility of centralized management and supply through the EK controllers (UC TRB, UC TR y UC HS) and EK CLOUD
Device Management	Back-up configuration
	Restore the configuration
	Reset to factory default
	Reboot the device
	Admin management password modify
	Firmware upgrade
Protocols	System log
	Programming through web management
Operating temperature	IPv4
Mounting type	-30~70°C Humidity: 5%-95%
	Exterior wall or mast mounting

TR 3000W6 OLP

- ✓ IEEE 802.11 b/g/n/ac/ax
- ✓ Data-rate capacity 3000Mbps (tri-band)
- ✓ MU-MIMO technology for simultaneous communication with multiple devices.
- ✓ Beamforming technology with wireless transmission beam adaptation
- ✓ Supports SSID Broadcasting and multiple SSIDs
- ✓ 5GHz network prioritization for decongestion of the 2.4GHz band
- ✓ Possibility of user isolation
- ✓ Simple programming via web interface in several languages
- ✓ Adjustable high Wireless power
- ✓ 2 GE LAN ports (10/100/1000Mbps)
- ✓ PoE 802.3at 48Vdc power supply or autonomous with external power supply
- ✓ Outdoor installation
- ✓ High quality housing with high heat dissipation. Suitable for any type of environment (-30°C ~ 70°C)
- ✓ Possibility of centralized management with EK CLOUD
- ✓ Access points combinable with the EK network hotspot and auditing (CM HS and HS BASIC)
- ✓ Compatible with PC controller "CSW"
- ✓ Compatible with Chromecast®





INDOOR ACCESS POINTS

REFERENCE	TR 1200	
Code	331007	
Hardware		
Antenna	GHz	2'4 : 2x2:2 5: 2x2:2
Potency of transmission	2'4GHz: 802.11bgn, 20-30 dBmW 5GHz: 802.11an/ac, 18-28 dBmW (EK recommends setting the maximum transmission power following the current regulations of each country)	
Reset button	Factory reset and values	
Software and Operation		
Operating modes	AP, router, repeater, link WISP	
Configuration	Web, Telnet, Controller	
Options	VLAN-SSID segmentation, WLAN partition, Preferred 5G, activity log, FIT AP, power and sensitivity modulation, IP security (URL filters, IP, etc.), DDNS	
Interfaces		
Ethernet	Mbps	2x 10/100/1000
Modulation Speed	Mbps	802.11bgn: 11, 54, 300 802.11ac: 900
Bandwidth	MHz	802.11bgn: 20, 40 802.11ac: 20, 40, 80
Canalization	2'4 GHz: 1..13 5 GHz: U-NII 36..48 U-NII 2A 52..68 U-NII 2C 96..140 U-NII 3 149..165 (Selectable channel bands according to regulation)	
Modulation	DSSS: DBPSK, DQPSK, CCK OFDM: BPSK, QPSK, 16QAM..256QAM	
Encryption	WPA2-Personal (TKIP/AES128)	
General		
Power supply	PoE 802.3at (48V) 12 Vdc / 2A	
Working temperature	°C	0 – 55
Consumption	W	max. 12,5 (PoE)
Dimensions	mm	188x188x34
Weight	g	392
Packaging	mm	245x235x75

TR 1200

- ✓ Dual 2.4GHz and 5GHz operation
- ✓ High speed WiFi - TR 1200 (300/900)
- ✓ Compatible 802.11ac Wave2 (MU-MIMO) - TR 1200
- ✓ Adjustable sensitivity and power
- ✓ RSSI roaming
- ✓ Multiple SSIDs
- ✓ Compact design
- ✓ Operation modes: router, AP and repeater
- ✓ Suitable for high user density
- ✓ VLAN support for traffic segmentation
- ✓ PoE or 12Vdc power supply



TR 1200

Ek



INDOOR ACCESS POINTS

REFERENCE	TR 750	
Code	331006	
Hardware		
Antenna	GHz	2'4: 2x2:2 5: 1x1:1
Potency of transmission	2'4GHz: 802.11bgn, 20-27 dBmW 5GHz: 802.11n/ac, 17-24 dBmW (EK recommends setting the maximum transmission power following the current regulations of each country)	
Reset button	Factory reset and values	
Software and Operation		
Operating modes	AP, router, repeater, link WISP	
Configuration	Web, Telnet, Controller	
Options	VLAN-SSID segmentation, WLAN partition, Preferred 5G, activity log, FIT AP, power and sensitivity modulation, IP security (URL filters, IP, etc.), DDNS	
Interfaces		
Ethernet	Mbps	2x 10/100
Modulation Speed	Mbps	802.11bgn: 11, 54, 300 802.11ac: 450
Bandwidth	MHz	802.11bgn: 20, 40 802.11ac: 20, 40, 80
Canalization	2'4 GHz: 1..13 5 GHz: U-NII 36..48 U-NII 2A 52..68 U-NII 2C 96..140 U-NII 3 149..165 (Selectable channel bands according to regulation)	
Modulation	DSSS: DBPSK, DQPSK, CCK OFDM: BPSK, QPSK, 16QAM, 256QAM	
Encryption	WPA2-Personal (TKIP/AES128)	
General		
Power supply	PoE 802.3at (48V) 12 Vdc / 2A	
Working temperature	°C	0 - 55
Consumption	W	max. 18 (PoE)
Dimensions	mm	188x188x34
Weight	g	392
Packaging	mm	245x235x75

TR 750

- ✓ Dual 2.4GHz and 5GHz operation
- ✓ High speed WiFi - TR 750 (300/450)
- ✓ Adjustable sensitivity and power
- ✓ RSSI roaming
- ✓ Multiple SSIDs
- ✓ Compact design
- ✓ Operation modes: router, AP and repeater
- ✓ Suitable for high user density
- ✓ VLAN support for traffic segmentation
- ✓ PoE or 12Vdc power supply



Ek



WIRELESS OUTDOOR ACCESS POINT

REFERENCE	TR 1200 OLP
Code	331008
Hardware	
Antenna	4 x Omni 5 dBi
Transmission power	Max. 24 - 27 dBm (IEEE802.11 b/g/n) - 2.4Ghz Max. 21 -24 dBm (IEEE802.11 n/ac) - 5.8Ghz (EK recomienda fijar la potencia máxima de transmisión siguiendo la normativa vigente de cada país)
Reset button	Reset y valores de fabrica
Software	
Programming	Configuración WEB, TELNET
Options	VLAN, QoS, control de ancho de banda, limitación "broadcast storm",...
Connections	
Ethernet Interface	2 x 10 /100 /1000 Mbps puertos Ethernet
Power Supply	PoE: 48V, 12Vdc/1A Connector
Wireless	
Operating mode	AP, Gateway, Repetidor, WISP
Throughput 2.4 GHz	IEEE802.11b:11Mbps IEEE802.11g: 54Mbps IEEE802.11n: 300Mbps
Throughput 5.8 GHz	IEEE802.11ac: 900Mbps
Frequency	2.4 GHz 5.180 GHz-5.825 GHz
Channel	1 - 13 for 2.4 GHz 36 - 165 for 5.8 GHz
Modulation mode	OFDM, DSSS
Coding	BPSK, QPSK, 16QAM and 64QAM / DBPSK, DQPSK, CCK
Encryption	802.11i Security: WEP-64/128, TKIP(WPA-PSK) y AES(WPA2-PSK)
General	
Grade of IP protection	IP65
Working temperature	-40 - 70°C
Power consumption	Max. 16 W
Dimensions	31,5 x 14,5 x 8 cm

TR 1200 OLP

- ✓ High-speed 802.11AC 1200 Mbps
- ✓ 2.4 Ghz and 5.8 GHz frequency bands
- ✓ Supports high user density
- ✓ Multiple SSID
- ✓ Long-range 400m (*)
- ✓ AP Mode / Router / Repeater / WISP
- ✓ PoE 48Vdc power supply



TR 1200
OLP

Ek

LAN CONTROLLER - PROFESSIONAL TR SERIES

UC MINI · UC TRB · UC RACK · UC EK

REFERENCE	Code	Description
UC MINI	331009	Desktop format control and provisioning unit. Power supply from PC. Maximum 50 access points. Ek Cloud compatible.
UC TRB	331002	Desktop format control and provisioning unit. Power supply included. Maximum 300 access points. Ek Cloud compatible.
UC RACK	331010	19" rack format control and provisioning unit. Power supply not included. Maximum 300 access points. Ek Cloud compatible.
UC EK	331011	19" rack format control and provisioning unit. Power supply not included. Maximum 2000 access points. Ek Cloud compatible.



UC MINI



UC TRB

UC RACK



UC EK



2,4 GHz SERIES



WIRELESS ACCESS POINT

REFERENCE	AP 300 LP
Code	330004
Hardware	
Antenna	2 x Omni 5dbi
RF	2T2R, 300 Mbps MIMO
Transmission power	Max. 20 - 23 dBm (IEEE802.11 b/g/n) - 2.4Ghz (EK recommends setting the maximum transmitting power according to the current legislation of each country)
Reset button	Reset and factory settings
Software	
Programming	Network management WEB, TELNET
Options	VLAN, QoS, bandwidth control, limitation "broadcast storm",....
Connections	
Ethernet Interface	1 x 10/100 Mbps Ethernet (connectors RJ45) ports
Power Supply	PoE: 24V IEEE 802.3af ; DC12 V/1A Connector
Wireless	
Operating mode	AP, Gateway, Repeater
Throughput	IEEE802.11b: 11Mbps IEEE802.11g: 54Mbps IEEE802.11n: 300Mbps
Frequency	2.4GHz-2.4835 GHz
Channel	13. Configurable for various standards
Modulation mode	DSSS and OFDM
Coding	BPSK, QPSK, 16QAM and 64QAM
Encryption	802.11i Security: WEP-64/128, TKIP(WPA-PSK) and AES(WPA2-PSK)
General	
Working temperature	0°C - 55°C
Power consumption	Max 12,5 W
Dimensions	Ø 15.7 x 3.6 cm

AP 300 LP

- ✓ 300 Mbps / 2,4 Ghz
- ✓ Supports high user density
- ✓ Compact design
- ✓ Multiple SSID
- ✓ Large coverage. Range 140-160m (*)
- ✓ 1 Ethernet ports
- ✓ Power PoE 24Vdc or 12Vdc source
- ✓ Injector PoE included



Ek

WIRELESS OUTDOOR CPE / AP

REFERENCE	CPE 300-24V2
Code	333013
Hardware	
Antenna	1 x 8 dBi
Transmission power	Max. 20 dBm (IEEE802.11 b/g/n) - 2.4Ghz (EK recommends setting the maximum transmitting power according to the current legislation of each country)
Half-power beam width	H: 60° V: 5°
Reset button	Reset and factory settings
Software	
Programming	Network management WEB
Options	VLAN, QoS, bandwidth control, limitation "broadcast storm",...
Connections	
Ethernet Interface	2 x 10 /100 Mbps Ethernet ports
Power Supply	PoE: 24V, 12Vdc/1A Connector
Wireless	
Operating mode	AP, Gateway, Repeater, SUPER WDS
Throughput 2.4 GHz	IEEE802.11B: 11MBPS IEEE802.11G: 54MBPS IEEE802.11N: 300MBPS
Frequency	2.4 GHz
Channel	1 - 13 2.4 GHz
Modulation mode	OFDM, DSSS
Coding	BPSK, QPSK, 16QAM and 64QAM / DBPSK, DQPSK, CCK
Encryption	802.11i Security: WEP-64/128, TKIP(WPA-PSK) and AES(WPA2-PSK)
General	
Working temperature	-40°C - 55°C
Power consumption	Max. 20 W
Dimensions	16 x 9 x 6 cm

CPE 300-24V2

- ✓ 300 Mbps / 2.4 Ghz
- ✓ Supports high user density
- ✓ Multiple SSID
- ✓ Long-range 1km (*)
- ✓ AP Mode / Router / Repeater / WISP
- ✓ PoE 24Vdc power supply



CPE 300-24V2



EKSELANS BY ITS

EKSELANS by ITS

ITS Partner O.B.S. S.L

Av. Cerdanyola 79-91 Local C

08172 Sant Cugat del Vallès

Barcelona (España)

Tel: +34 93 583 95 43

info@ek.plus

www.ek.plus