



EKSELANS BY ITS

**TR ENTERPRISE
SERIES.
PROFESSIONAL
WIFI ACCESS
POINT SYSTEM**

ENTER THE EK WORLD



**100%
DESIGNED
by Ek**

TR ENTERPRISE SERIES PROFESSIONAL WIFI ACCESS POINT SYSTEM.

TR ENTERPRISE
PROFESSIONAL WIFI
ACCESS POINTS



Ekselans by ITS R&D team has fully developed the new series of TR Enterprise WiFi access points, based on the extensive experience provided by the countless WiFi installations made with EK access points.



The TR Enterprise Series is based on a very powerful hardware design on which software has been developed capable of responding to the most demanding market demands in terms of connectivity, connection speed, high concurrent users and high demand for multimedia services (HD videos, streaming, online gaming,...). Hotels, hospitals, offices, industrial facilities, shopping malls, individual houses and apartments,... Wherever connectivity requirements ask for a professional solution, the TR Enterprise Series is the right choice.



DC
LED
WAN
POE
LAN
RESET

**WHEREVER CONNECTIVITY REQUIREMENTS
ASK FOR A PROFESSIONAL SOLUTION, THE TR
ENTERPRISE SERIES IS THE RIGHT CHOICE.**

TR Enterprise Series Key-Points

- IEEE 802.11ac Wave 2
- Data-rate capacity from 1300Mbps (dual-band) to 2200Mbps (tri-band)
- MU-MIMO technology for simultaneous communication with multiple devices.
- Up to 8 spatial streams for high concurrency of simultaneous users
- Beamforming technology with wireless transmission beam adaptation
- Roaming 802.11k / v / r
- Supports SSID Broadcasting and multiple SSIDs
- 5GHz network prioritization for decongestion of the 2.4GHz band
- Possibility of user isolation
- Simple programming via web interface in several languages
- Contextual help menus in real time
- Adjustable high Wireless power
- 2 GE LAN ports (10/100/1000Mbps)
- PoE 802.3at 48Vdc power supply or autonomous with external power supply
- Easy-to-intall ceiling or wall mounting
- High quality housing with high heat dissipation. Suitable for any type of environment (-30°C - 70°C)
- Possibility of centralized management and provisioning through EK controllers (UC TRB, UC TR and UC HS)
- Access points combinable with the EK network hotspot and auditing (CM HS and HS BASIC)

802.11ac
Wave 2

MU-MIMO

8 spatial
streams

Fast
roaming
802.11k/v/r

2 x GE
LAN
PORTS

5GHz
PRIORITIZATION

Menús de
ayuda en
tiempo real

Ek



TR ENTERPRISE SERIE

TR 1300

REFERENCE	TR 1300
Code	331000
Hardware:	
Chipset	Qualcomm IPQ4019+QCA9886+QCA8075
Standard	802.11ac/b/g/n, MIMO technology
DDR3	512MB
Flash	32MB
2.4G Frequency	2.4GHz - 2.484GHz
2.4G Wi-Fi standard	802.11b/g/n
5.8G Frequency	IPQ4019: 5.150GHz-5.320GHz; QCA9886: 5.500GHz!5.825GHz
5.8G Wi-Fi Standard	802.11 a/n/ac
Interface	1 * 10/100 /1000Mbps RJ45 WAN Port
	1 * 10/100 / 1000Mbps RJ45 LAN Port
	1 * Reset button, press 10 seconds to revert to default setting
Antenna	Build in 3dBi MIMO Antenna
Data Rate	1300Mbps (400Mbps 2.4GHz + 900Mbps 5GHz)
End Users	64
RF Power	£ 25dBm
DC	12V 2A
PoE	48V (IEEE 802.3at)
LED light	Sys, WAN, LAN
ESD	±4KV
Max Power Consumption	£ 24W
Size	198mm * 198mm * 41.02mm
Weight	786.7g
Firmware Features:	
Operation mode	Wireless AP: Plug and Play Gateway: Dynamic IP/Static IP/PPPoE Wi-Fi Repeater: Bridge exist wireless signal, then extend to more range. WISP: For WLAN ISP, bridge ISP's exist wireless signal, then dial-up to obtain Ethernet and extend more wireless range.
Wireless Functions	Multiple SSID functions: 2.4GHz: 4; 5.8GHz: 8
	Support SSID hidden
	Support seamless roaming, 802.11kvr standard.
	Support 5G Prior for a faster Ethernet.
	Wireless Security: Open, WPA, WPA2PSK, TKIPAES, WAP2_EAP, 802.1x
	MAC filter
	Support Wi-Fi time on/off to save energy
	Support client isolation to improve the wireless stability
	Support RF power adjustable, adjust the RF power based on environment.
Support user quantity limited, Max 64 users to access each band.	
Networking Function	VLAN settings
	Cloud access support in gateway mode
Device Management	Back-up the configuration
	Restore the configuration
	Reset to factory default
	Reboot the device: including time reboot or reboot immediately
	Admin management password modify
	Firmware upgrade
	System log
Support firmware GUI web management, AC controller management, remote management and cloud management	
Protocols	IPv4
Others:	
Environment	-30~70°C Humedad: 5%-95%

- IEEE 802.11ac Wave 2
- Data-rate capacity from 1300Mbps (dual-band)
- MU-MIMO technology for simultaneous communication with multiple devices.
- Up to 8 spatial streams for high concurrency of simultaneous users
- Beamforming technology with wireless transmission beam adaptation
- Roaming 802.11k / v / r
- Supports SSID Broadcasting and multiple SSIDs
- 5GHz network prioritization for decongestion of the 2.4GHz band
- Possibility of user isolation
- Simple programming via web interface in several languages
- Adjustable high Wireless power
- 2 GE LAN ports (10/100/1000Mbps)
- PoE 802.3at 48Vdc power supply or autonomous with external power supply
- Easy-to-intall ceiling or wall mounting
- High quality housing with high heat dissipation. Suitable for any type of environment (-30°C - 70°C)
- Possibility of centralized management and provisioning through EK controllers (UC TRB, UC TR and UC HS)
- Access points combinable with the EK network hotspot and auditing (CM HS and HS BASIC)



TR ENTERPRISE SERIE

Ek



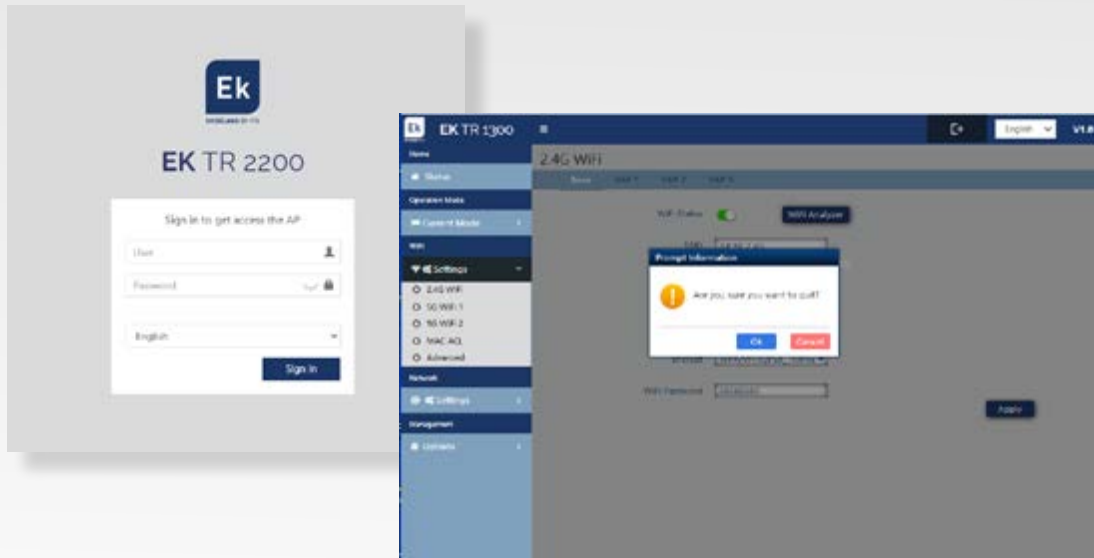
TR 2200

- IEEE 802.11ac Wave 2
- Data-rate capacity from 2200Mbps (tri-band)
- MU-MIMO technology for simultaneous communication with multiple devices.
- Up to 8 spatial streams for high concurrency of simultaneous users
- Beamforming technology with wireless transmission beam adaptation
- Roaming 802.11k / v / r
- Supports SSID Broadcasting and multiple SSIDs
- 5GHz network prioritization for decongestion of the 2.4GHz band
- Possibility of user isolation
- Simple programming via web interface in several languages
- Adjustable high Wireless power
- 2 GE LAN ports (10/100/1000Mbps)
- PoE 802.3at 48Vdc power supply or autonomous with external power supply
- Easy-to-intall ceiling or wall mounting
- High quality housing with high heat dissipation. Suitable for any type of environment (-30°C - 70°C)
- Possibility of centralized management and provisioning through EK controllers (UC TRB, UC TR and UC HS)
- Access points combinable with the EK network hotspot and auditing (CM HS and HS BASIC)

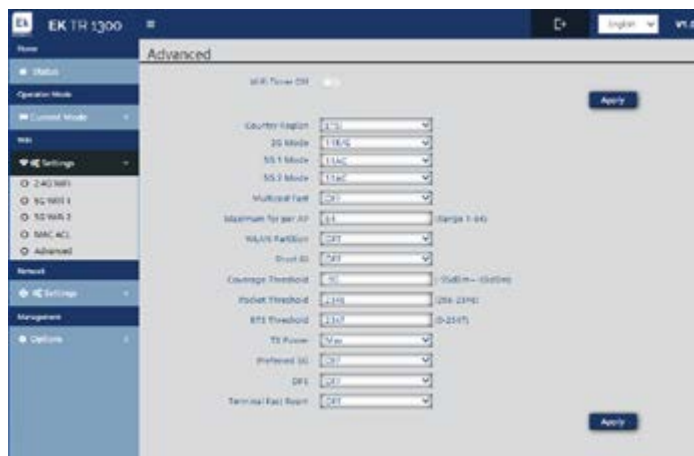


REFERENCE	TR 2200
Code	331001
Hardware:	
Chipset	Qualcomm IPQ4019+QCA9886+QCA8075
Standard	802.11ac/b/g/n, MIMO technology
DDR3	512MB
Flash	32MB
2.4G Frequency	2.4GHz - 2.484GHz
2.4G Wi-Fi standard	802.11b/g/n
5.8G Frequency	IPO4019: 5.150GHz-5.320GHz; QCA9886: 5.500GHz/5.825GHz
5.8G Wi-Fi Standard	802.11 a/n/ac
Interface	1 * 10/100 / 1000Mbps RJ45 WAN Port 1 * 10/100 / 1000Mbps RJ45 LAN Port 1 * Reset button, press 10 seconds to revert to default setting
Antenna	Build in 3dBi MIMO Antenna
Data Rate	2200Mbps (400Mbps 2.4GHz + 900Mbps 5G + 900Mbps 5GHz)
End Users	64
RF Power	£ 25dBm
DC	12V 2A
PoE	48V (IEEE 802.3at)
LED light	Sys, WAN, LAN
Surge	Different Mode: ±2KV, Common Mode: ±4KV
ESD	±4KV
Max Power Consumption	£ 24W
Size	198mm * 198mm * 41.02mm
Weight	786.7g
Firmware Features:	
Operation mode	Wireless AP: Plug and Play Gateway: Dynamic IP/Static IP/PPPoE Wi-Fi Repeater: Bridge exist wireless signal, then extend to more range. WISP: For WLAN ISP, bridge ISP's exist wireless signal, then dial-up to obtain Ethernet and extend more wireless range.
Wireless Functions	Multiple SSID functions: 2.4GHz: 4; 5.8GHz: 8 Support SSID hidden Support seamless roaming, 802.11kvr standard. Support 5G Prior for a faster Ethernet. Wireless Security: Open, WPA, WPA2PSK, TKIPAES, WAP2_EAP, 802.1x MAC filter Support Wi-Fi time on/off to save energy Support client isolation to improve the wireless stability Support RF power adjustable, adjust the RF power based on environment. Support user quantity limited, Max 64 users to access each band.
Networking Function	VLAN settings Cloud access support in gateway mode
Device Management	Back-up the configuration Restore the configuration Reset to factory default Reboot the device: including time reboot or reboot immediately Admin management password modify Firmware upgrade System log Support firmware GUI web management, AC controller management, remote management and cloud management
Protocols	IPv4
Others:	
Package Contents	2200Mbps Dual Band wireless access point Ethernet Cable / Quick Installation Guide Installation Accessory
Environment	-30-70°C Humedad: 5%-95%

TR ENTERPRISE SERIES PROFESSIONAL WIFI ACCESS POINT SYSTEM.



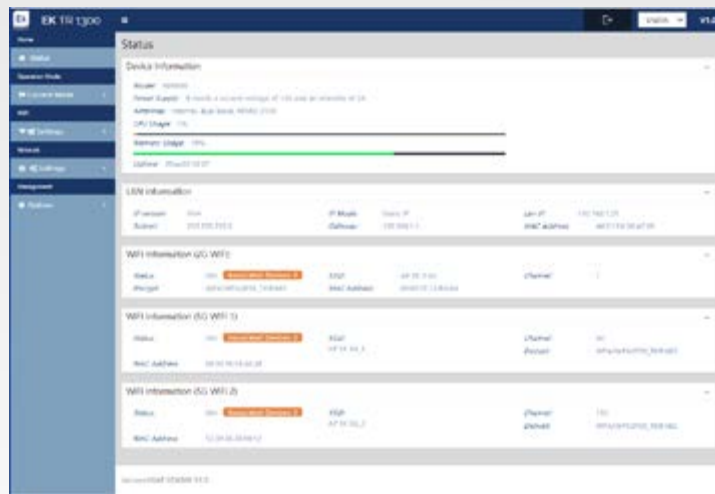
LOGIN & LOGOUT



ADVANCED SETTINGS



NETWORK SETTINGS



STATUS



CONTEXTUAL HELP MENUS
IN REAL TIME



EKSELANS BY ITS

EKSELANS by ITS

ITS Partner O.B.S. S.L

Av. Cerdanyola 79-91 Local C

08172 Sant Cugat del Vallès

Barcelona (España)

Tel: +34 93 583 95 43

info@ek.plus

www.ek.plus